

NB-301A

5.7Mbps G.shdsl bis LAN Extender



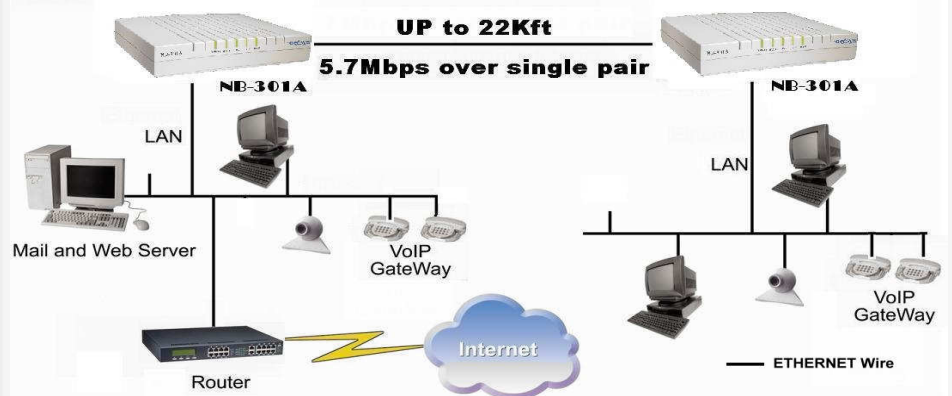
General Description

NB-301A (G.shdsl bis LAN Extender) from Netsys provides a broadband transmission speed up to 5.7 Mbps, through G.shdsl bis connection over single pair copper line for point-to-point LAN connectivity between two sites. With its rate adaptive features, NB-301A provides longer reach on transmission distance. Users may also select a fixed data rate for the copper line ranging from 64 kbps to 5,696 kbps.

A pair of NB-301A offers a cost effective solution for bandwidth-hungry applications such as video-conferencing and distant learning over single twisted pair telephone line. NB-301A is indeed an ideal symmetrical broadband solution for LAN-to-LAN connectivity, Internet Access, VoIP application, and etc...

Application Diagram

LAN-to-LAN Extension



Distance Table

Data Rate (Kbps)	Distance (ft)
5696	4500
4608	5500
3072	9500
2304	12000
2048	13000
1544	13300
1152	15000
768	17000
512	18000
64	22500

For Your Reference.

For more product information, visit us on the web www.Netsys.com.tw

NETSYS is a trademark of National Enhance Technology Corp. The information given in this document shall in no event be regarded as a guarantee of conditions or characteristics. With respect to any examples or hints given herein, any typical values stated herein and/or any information regarding the application of the device, National Enhance Technology Corp. hereby disclaims any and all warranties and liabilities of any kind, including without limitation warranties of non-infringement of intellectual property rights of any third party.

In the interest of improving internal design, operational function, and/or reliability, NETSYS reserves the right to make changes to the products described in this document without notice. NETSYS does not assume any liability that may occur due to the use or application of the product(s) or circuit layout(s) described herein.

Copyright ©2008 by National Enhance Technology Corp. All rights reserved.

NB-301A

5.7Mbps G.shdsl bis LAN Extender

Key Features & Benefits

- ITUT G.991.2 Compliance.
- G.shdsl bis Line Code: TCPAM.
- Fixed Data Rate Selection from 64Kbps to 5696Kbps.
- Adaptive Multi Rate from 192Kbps to 4608 Kbps.
- Maximum Distance: 22000 ft over single pair.
- Auto MDIX for 10/100 Base T Ethernet LAN Ports.
- Console port for NMS Configurations.
- Effective solution for bandwidth-hungry applications.

Product Specifications

G.shdsl bis Transmission:

- ITU-T G.991.2 Compliance
- TCPAM – 16 Level Line Code
- Rate: 64 Kbps ~ 5.696 Mbps
- RJ-45 Connector x 1

LAN Interface:

- Auto-Detection for 10/100 Base T and Half/Full duplex
- High performance bridge for Ethernet extension
- Fully compatible with IEEE802.3/IEEE802.3U
- Automatic MDIX Function
- RJ-45 Connector x 1

LED Indication:

- POWER: Power is ON
- TEST: NB-301A Self Test
- LINE: G.SHDSL Line connection status
- LAN: Data Activity of LAN Port
- 100M: LAN port is in 100M Ethernet connector

EMC Compliant:

CE, FCC

Environmental

Protection Compliant: RoHS

Operating Temperature: 0°C ~ 50°C(41°F ~ 122°F)

Storage Temperature: -20°C ~ 70°C(-4°F ~ 158°F)

Humidity: 5 to 95% (non-condensing)

External Power Adapter:

Input: AC 100~220 volts/50~60Hz
Output: DC 12V/1A

Weight:

About 1 kg

Dimension:

154 x 139 x 31 mm



NETSYS is a trademark of National Enhance Technology Corp. The information given in this document shall in no event be regarded as a guarantee of conditions or characteristics. With respect to any examples or hints given herein, any typical values stated herein and/or any information regarding the application of the device, National Enhance Technology Corp. hereby disclaims any and all warranties and liabilities of any kind, including without limitation warranties of non-infringement of intellectual property rights of any third party.

In the interest of improving internal design, operational function, and/or reliability, NETSYS reserves the right to make changes to the products described in this document without notice. NETSYS does not assume any liability that may occur due to the use or application of the product(s) or circuit layout(s) described herein.

Copyright ©2008 by National Enhance Technology Corp. All rights reserved.

For more product information, visit us on the web www.Netsys.com.tw

