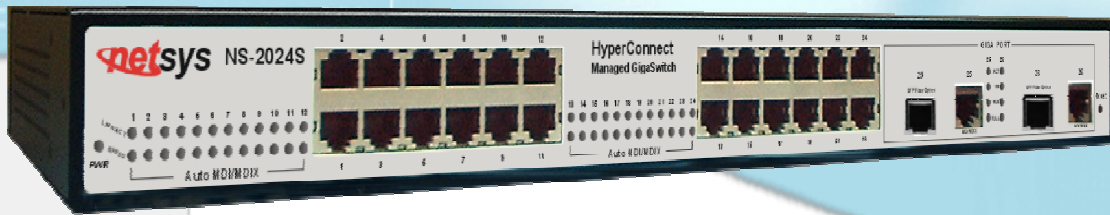


# NS-2024S

## 24+2G Hyper Connect Managed Switch

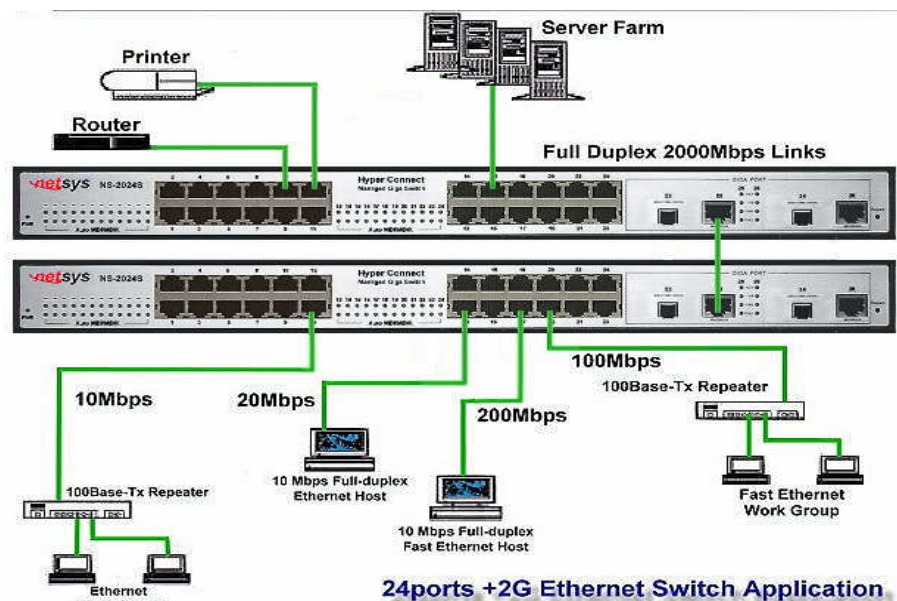


### General Description

The Netsys 24+2G Hyper Connect Managed Switch provides high performance layer 2 GigaBit Ethernet Switching and Bandwidth Management Per Port (100Kbps to 100Mbps) at an affordable price. The NS-2024S features 2 X 10/100/1000Mbps RJ-45/SFP Ethernet uplink ports, 24 X 10/100Mbps RJ-45 Ethernet ports, QOS VLAN and much more. NS-2024S also supports IGMP snooping by 256 IP multicast table for VOD (Video on demand) and video conference and Internet games application.

In addition to the unique bandwidth management feature, the NS-2024S Hyper Connect 24-Port Managed GigaSwitch supports a variety of standards based advanced switching features including Quality of Service (QOS) with priority queuing, VLAN and Dynamic VLAN, IGMP snooping (multicast), and link aggregation (LACP). The NS-2024S security features include a password protected Security Manager, MAC-based port security, and port based network access control (802.1x). Hyper Connect Managed Switches can be managed through the embedded based network access control (802.1x). Hyper Connect Managed Switches can be managed through the imbedded command line interface (CLI), via Web Browser, or through SNMP-based management console applications. Firmware upgrades are available through TFTP and XMODEM. Hyper Connect Managed Switches can also be stacked to increase network density.

### Application Diagram



NETSYS is a trademark of National Enhance Technology Corp.

The information given in this document shall in no event be regarded as a guarantee of conditions or characteristics. With respect to any examples or hints given herein, any typical values stated herein and/or any information regarding the application of the device, National Enhance Technology Corp. hereby disclaims any and all warranties and liabilities of any kind, including without limitation warranties of non-infringement of intellectual property rights of any third party.

In the interest of improving internal design, operational function, and/or reliability, NETSYS reserves the right to make changes to the products described in this document without notice. NETSYS does not assume any liability that may occur due to the use or application of the product(s) or circuit layout(s) described herein.

Copyright ©2007 by National Enhance Technology Corp. All rights reserved.

For more product information, visit us on the web [www.netsys.com.tw](http://www.netsys.com.tw)



**Order Information:** NS-2024S (24+2G Hyper Connect Managed Switch)

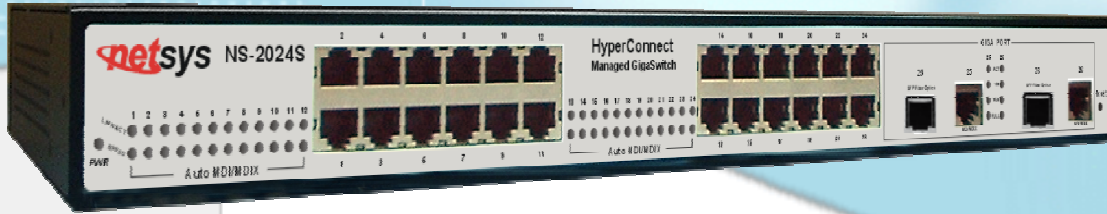


9F, NO.208, TATUNG RD, SEC3, HSI CHIH, TAIPEI HSIEN, TAIWAN, R. O. C  
TEL: 886-2-8647-3456 FAX: 886-2-8647-1120 [sales@netsys.com.tw](mailto:sales@netsys.com.tw)



# NS-2024S

## 24+2G Hyper Connect Managed Switch



### Key Features & Benefits

- Provides 2 x 10/100/1000Mbps auto-sensing RJ-45(Copper mode) or SFP Auto-link and Hot Swap Ethernet ports for trunking connection.
- Provides 24 x 10/100Mbps auto-sensing RJ-45 Ethernet ports.
- Supports Copper/ Fiber Auto-Link with hot swap for Gigabit Ethernet port.
- Supports HOL (Head Of Line) blocking prevention.
- Supports IEEE802.3ad port trunking.
- Supports IEEE 802.1q tagging VLAN, IEEE 802.1v protocol VLAN and port based VLAN.
- Supports IEEE802.1x port base network control access.
- Supports IEEE-802.1p QOS.
- Supports IEEE 802.1d Spanning trees.
- Supports port Mirroring (Sniffer), Broadcast Storm filtering.
- Supports MAC filtering / Learning limit.
- Supports BOOTP/DHCP Client.
- Supports Telnet for remote control access and WEB Base for Management.
- Supports SNMP v1 RFC-1493 Bridge MIBs, RFC-1643 Ethernet MIB, RFC-1213 MIB II.
- Supports RMON groups 1(Statistics), 2(Alarm), 3(Event), 9(History)/ RFC-1757.
- Supports TFTP/XMODEM for firmware upgrade.
- Supports In-Band/Out-of-Band Management.
- EMI certified by FCC.

### Product Specification

<b>Standard:</b>	IEEE802.3 standard IEEE802.3u standard IEEE802.3z standard IEEE802.3ab standard
<b>Interface:</b>	24 x RJ-45 10/100Mbps Ethernet port 2 x RJ-45/SFP 10/100/1000Mbps connector
<b>Flow control:</b>	Full duplex: IEEE 802.3x Half duplex: Back pressure
<b>MAC address table:</b>	6K Entries
<b>LED indication:</b>	Power Link/Active/Speed/Duplex Status for Ethernet port
<b>Internal switching power adapter Input:</b>	AC 85-265 volts/50-60Hz/1A
<b>Power Consumption:</b>	16W
<b>Operating Temperature:</b>	0°C ~ 50°C (32°F ~ 122°F)
<b>Storage Temperature:</b>	-20°C ~ 70°C (-4°F ~ 158°F)
<b>Humidity:</b>	10 to 90% (non-condensing)
<b>Dimensions:</b>	443.6mm x 209mm x 44mm

For more product information, visit us on the web [www.netsys.com.tw](http://www.netsys.com.tw)



**Order Information:** NS-2024S (24+2G Hyper Connect Managed Switch)



9F, NO.208, TATUNG RD, SEC3, HSI CHIH, TAIPEI HSIEN, TAIWAN, R. O. C  
TEL: 886-2-8647-3456 FAX: 886-2-8647-1120 [sales@netsys.com.tw](mailto:sales@netsys.com.tw)

